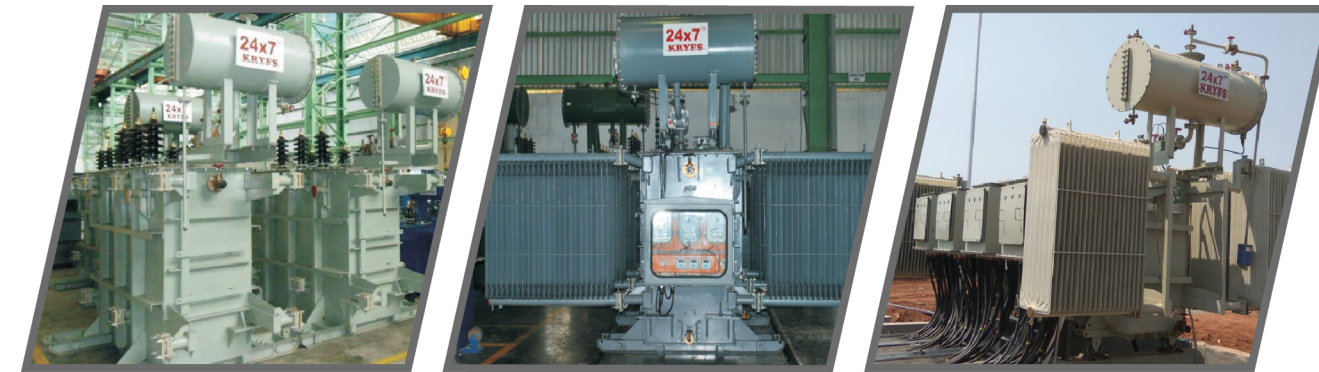


GLOBAL EXPORTS TO 40+ COUNTRIES



STAR RATING & ENERGY EFFICIENT LOW LOSS TRANSFORMERS




KRYFS
 Hamesha Kaizen



KRYFS Power Components Ltd.

3rd Floor, AZA House, 24, Turner Road, Bandra (W), Mumbai - 400 050, India
 Phone: +91 22 - 6785 9999 | Fax: +91 22 - 6785 9988
 www.kryfs.com | E-mail: sales@kryfs.com

POWER TRANSFORMERS • DISTRIBUTION TRANSFORMERS • CORE ASSEMBLY • CORE COIL ASSEMBLY

POWER TRANSFORMERS • DISTRIBUTION TRANSFORMERS • CORE ASSEMBLY • CORE COIL ASSEMBLY

SERVING THE POWER SECTOR SINCE 1992

7 H VALUES



Honesty



Humility



Humanitarian Approach



Helpful Nature



Hard Work



Happy Outlook



Hamesha Kaizen



Strategic Alliance

TOYOTA TSUSHO CORPORATION

Toyota Tsusho Corporation is a strategic partner of KRYFS since May 2012.

About KRYFS

KRYFS Power Components Ltd. is India's largest CRGO transformer core solution company. Commencing production in December 1992, from a humble beginning at Palghar (Maharashtra), with a capacity of 100 MTPA, KRYFS has become India's largest importer and processor of Prime CRGO steel from Japan, USA, Europe, China and Korea. KRYFS has 9 factories located at Palghar, Silvassa, Vadodara and Bhopal on the western coast of India. With 13 automated core cutting lines, 4 slitting machines, and all the latest processing and testing equipment for CRGO Steel, KRYFS is India's most trusted brand by the transformer industry for a transformer core. It is a recognized Star Export House by Ministry of Commerce, Government of India since 2005. Toyota Tsusho Corporation, Japan, a US \$79 billion conglomerate, has acquired a strategic stake of 20% in KRYFS, making it the only independent lamination company in the world, to have the backing of a multinational giant.

Vision

Our vision is to positively contribute to the growth and development of all our stakeholders which includes society, employees, customers, suppliers and shareholders, by operating businesses that are profitable, sustainable and environmentally friendly.

KRYFS Group - a synopsis

- Established in December 1992
- Exports to more than 40+ countries globally
- CRGO Laminations, Built Core, Torroidal Core, Unicores, Distribution Transformers, CT (Active Part)
- Power and Distribution Transformers upto 33 KV class
- EPC
- Solar Rooftop
- Material Handling
- Rigging Tools and Tackles
- Stringing T+P's for Transmission Projects

Type Tested at CPRI & ERDA



Power Transformer								
Customer/ State	Rating (KVA)	Voltage Class (kV)	No Load Loss	Full Load Loss	Impedence	Temp. Rise (°C)	Tap Changer and Tapping Range	
Orissa	3150	33/11 KV	3 KW	17 KW	6.25% (+10% Tol)	35/40	OCTC	+5% to -15% (6 taps in 8 steps of 2.5% each)
MSEDCL/Maharashtra	5000	33/11 KV	3.6 KW	19 KW	7.15% (+/- IS Tol)	45/50	OLTC	+5% to -15% (17 taps in 16 steps of 1.25% each)
Orissa	5000	33/11 KV	3.6 KW	21 KW	7.15% (+10% Tol)	35/40	OCTC	+5% to -15% (9 taps in 8 steps of 2.5% each)
Bihar	5000	33/11 KV	4 KW	23 KW	7.15% (+/- IS Tol)	40/45	OCTC	+5% to -15% (9 taps in 8 steps of 2.5% each)
Orissa	8000	33/11 KV	4.5 KW	38 KW	8.35% (+/- Tol)	35/40	OLTC	+5% to -15% (9 taps in 8 steps of 2.5% each)
Bihar	10000	33/11 KV	7 KW	50 KW	8.35% (+ve IS Tol)	50/55	OCTC	+5% to -15% (9 taps in 8 steps of 2.5% each)
Uttar Pradesh	10000	33/11 KV	8 KW	50 KW	8.35% (+/- IS Tol)	45/50	OCTC	+5% to -15% (9 taps in 8 steps of 2.5% each)

Inverter Duty Transformer								
Customer/ State	Rating (KVA)	Voltage Class (kV)	No Load Loss	Full Load Loss	Impedence	Temp. Rise (°C)	Tap Changer and Tapping Range	
Solar	5000	33/4x0.380 kV	5 KW	44 KW	6.40%	50/55	OCTC	+5% to -5% (5 taps in 4 steps of 2.5% each)

Auxiliary Transformer								
Customer/ State	Rating (KVA)	Voltage Class (kV)	No Load Loss	Full Load Loss	Impedence	Temp. Rise (°C)	Tap Changer and Tapping Range	
NTPC	100	33/0.433 kV	0.5 KW	1.5 KW	4.5% (+/- IS Tol)	50/55	OCTC	+5% to -5% (5 taps in 4 steps of 2.5% each)
Kuwait	150	11/0.433 kV	0.295 KW	1.9 KW	5.44%	35/45	OCTC	+5% to -7.5% (6 taps in 5 steps of 2.5% each)

Distribution Transformer for BIS as per IS-1180								
Customer/ State	Rating (KVA)	Voltage Class (kV)	Losses at 50% Load	Losses at 100% Load	Impedence	Temp. Rise (°C)	Tap Changer and Tapping Range	
NTPC	1000	11/0.433 kV	2620 Watts	7000 Watts	5%	40/45	OCTC	+5% to -5% (5 taps in 4 steps of 2.5% each)
NTPC	1000	3.3/0.433 kV	2620 Watts	7000 Watts	5%	40/45	OCTC	+5% to -5% (5 taps in 4 steps of 2.5% each)
BIS	2500	11/0.433 kV	5900 Watts	17500 Watts	6.25%	40/45	OCTC	+5% to -10% (7 taps in 6 steps of 2.5% each)

Distribution Transformer								
Customer/ State	Rating (KVA)	Voltage Class (kV)	Losses at 50% Load	Losses at 100% Load	Impedence	Temp. Rise (°C)	Remarks	
GEB	10	11/0.433	101.25 (Max)	270 (Max)	4.5%	35/40	Non Star	
GEB	16	11/0.433	135 (Max)	390 (Max)	4.5%	35/40	4 Star / Level 2	
GEB	25	11/0.433	210 (Max)	615 (Max)	4.5%	35/40	3 Star / Level 1	
GEB	63	11/0.433	340 (Max)	985 (Max)	4.5%	35/40	4 Star / Level 2	
GEB	100	11/0.433	475 (Max)	1390 (Max)	4.5%	35/40	4 Star / Level 2	
GEB	250	11/0.433	1050 (Max)	3150 (Max)	4.5%	35/40	3 Star / Level 1	

Power Transformers • Distribution Transformers • Core Assembly • Core Coil Assembly

WWW.KRYFS.COM

7H VALUES

- Honesty
- Humility
- Humanitarian Approach

- Helpful Nature
- Hard Work
- Happy Outlook
- Hamesha Kaizen



Brockhaus Single Sheet testing



MORA Scale



Automated Georg (German) CNC line for cutting and auto stacking



State of the art facility



Brockhaus Franklin testing



World Class Testing Facilities



Auto Clave Oven



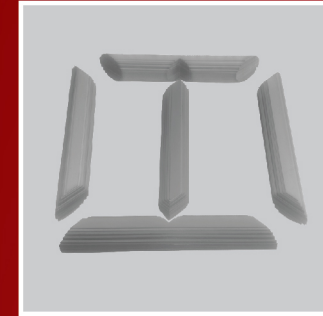
World Class Manufacturing Process



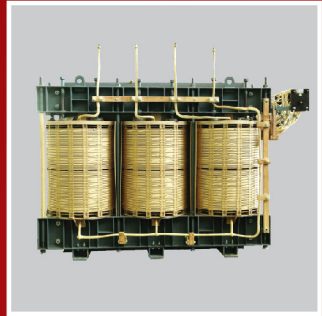
ISO 9001: 2015, ISO - 14001: 2015, OHSAS - 18001: 2007 CERTIFIED FACILITIES

Facilities and Services

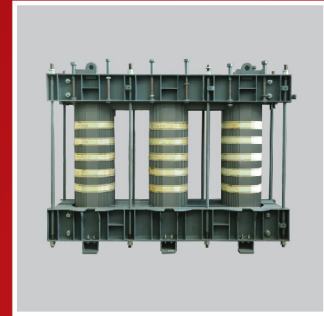
KRYFS GROUP BUSINESSES



CRGO LAMINATIONS
Upto 1200 kV Class & Upto 1040 mm Lamination width



CRGO CORE COIL ASSEMBLY
Upto 132 kV Class & Upto 50 MT



CRGO CORE ASSEMBLY
Upto 50 MT



TRANSFORMER
Upto 33 kV Class



TRANSFORMER TANKS
Upto 1200 kV Class



ENGINEERING, PROCUREMENT & CONSTRUCTION



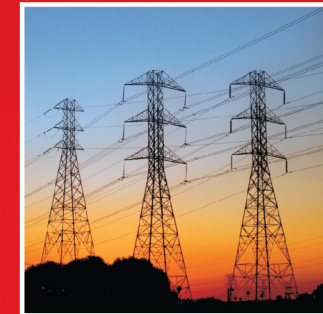
SOLAR ROOFTOP



AMORPHOUS CORE



MATERIAL HANDLING



STRINGING TOOLS

Over 750+ employees are part of a large committed family serving customers with dedication and commitment as embodied in the 7H values of KRYFS which is at the core of everything a KRYFSian does.

Power Transformers • Distribution Transformers • Core Assembly • Core Coil Assembly WWW.KRYFS.COM

7H VALUES



Honesty



Humility



Humanitarian Approach



Helpful Nature



Hard Work



Happy Outlook



Hamesha Kaizen

Power Transformers

KRYFS manufactures Power Transformers up to 10000 kVA (10MVA) 33 kV class, Oil filled Transformers (ONAN).

Successfully conducted Type test from 3.15 MVA to 10 MVA, 33/11 kV Power transformer at CPRI & ERDA



Power Transformers

Distribution Transformers

KRYFS Manufactures Distribution Transformers upto 4000 kVA (4 MVA) upto 33 kV class, Oil filled Transformers (ONAN).

We have BIS certificate for the supply of Oil Immersed Distribution Transformers up to 2500 kVA including Voltage Class up to 11 kV with Energy Efficiency Level 1, 2 & 3.



Distribution Transformers

Inverter Duty Transformers

KRYFS manufactures Inverter duty Transformers, Three winding / Four winding / Five winding Transformers / Auxilliary Transformers required for Solar power plants.

Successfully Type Tested 5 MVA 33/4 x 0.380 kV Inverter Duty Transformers



Inverter Duty Transformers

Approvals



Brands Who Trust Us



Products



Power Transformers • Distribution Transformers • Core Assembly • Core Coil Assembly

WWW.KRYFS.COM